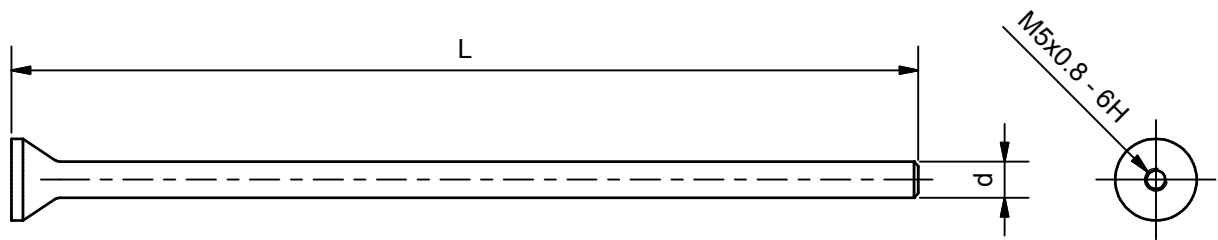




V.14.1

Säulen

leg special

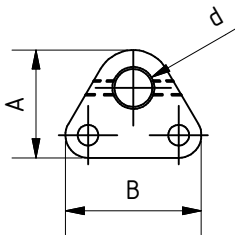


d	Länge L length L	Artikel.-Nr. part.no.
8	100	H11008
8	200	H10951
8	300	H10954
8	400	H11009
8	500	H11010
8	600	H11011
8	800	H11012
8	1000	H11013

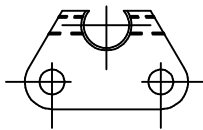
Fußplatten

foot plate

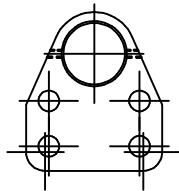
Pos.1



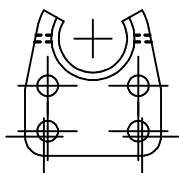
Pos.2



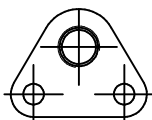
Pos.3



Pos.4



Pos.5



pos.	d	A	B	Für Keramikringhalter Bezeichnung description	for ferrule grip Material material	Artikel.-Nr. part.no.	Für Pistole for gun
1	22,2	57	72	Fußplatte22 footplate22	Hartgewebe fabric-base laminate	H10723	K22
1	22,2	57	72	Fußplatte22 footplate22	Aluminium aluminum	H10724	K22
1	22,2	40	65	Fußplatte22 footplate22	Hartgewebe fabric-base laminate	H10876	SK14
1	22,2	40	65	Fußplatte22 footplate22	Aluminium aluminum	H10875	SK14
2	22,2	45	72	Fußplatte22-offen footplate22-open	Hartgewebe fabric-base laminate	H10866	K22
3	22,2	80	72	Fußplatte22-Dreibein footplate22-tripot foot	Hartgewebe fabric-base laminate	H10869	K22
4	22,2	70	72	Fußplatte22-Dreibein offen footplate22-tripot foot open	Hartgewebe fabric-base laminate	H10872	K22
1	29,2	59	72	Fußplatte29 footplate29	Hartgewebe fabric-base laminate	H10726	K22
2	29,2	46	72	Fußplatte29 offen footplate29 open	Hartgewebe fabric-base laminate	H10867	K22
3	29,2	87	72	Fußplatte29-Dreibein footplate29-tripot foot	Hartgewebe fabric-base laminate	H10870	K22
4	29,2	87	72	Fußplatte29-Dreibein offen footplate29-tripot foot open	Hartgewebe fabric-base laminate	H10 873	K22
1	34	59	72	Fußplatte 34 footplate 34	Hartgewebe fabric-base laminate	H10725	K22
1	44	67	72	Fußplatte44 footplate44	Hartgewebe fabric-base laminate	H10727	K22
2	44	50	72	Fußplatte44-offen footplate44-open	Hartgewebe fabric-base laminate	H10 868	K22
3	44	92	72	Fußplatte44-Dreibein footplate44-tripod foot	Hartgewebe fabric-base laminate	H10871	K22
4	44	75	72	Fußplatte44-Dreibein offen footplate44-tripod foot open	Hartgewebe fabric-base laminate	H10874	K22
5	M22	57	72	Fußplatte M22x1,5 footplate M22x1,5	Hartgewebe fabric-base laminate	H10728	K22
5	M22	59	69	Fußplatte M22x1,5 alu footplate M22x1,5 alu	Aluminium aluminum	H10863	K22
5	M22	40	65	Fußplatte M22x1,5 alu footplate M22x1,5 alu	Aluminium aluminum	H10862	K22
5	M28	62	72	Fußplatte M28x1,5 footplate M28x1,5	Hartgewebe fabric-base laminate	H10729	K22
5	M48	69	72	Fußplatte M48x1,5 footplate M48x1,5	Hartgewebe fabric-base laminate	H10865	K22

für Stützrohr mit Gewinde-for pipe with threaded

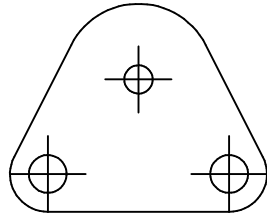


## Keramikringhalter als Fußplatte

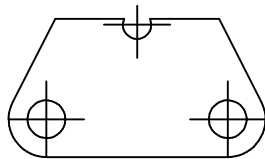
für Typ K22, K22 D

## ferrule grip / foot plate

for type K22, K22 D



für Bolzen $\emptyset$ for stud $\emptyset$	Bezeichnung description	Artikel.-Nr. part.no.
4	Keramikringhalter SSP4 ferrule grip SSP4	H10708
6	Keramikringhalter SSP6 ferrule grip SSP6	H10709
8	Keramikringhalter SSP8 ferrule grip SSP8	H10710
10	Keramikringhalter SSP10 ferrule grip SSP10	H10711
12	Keramikringhalter SSP12 ferrule grip SSP12	H10712
16	Keramikringhalter SSP16 ferrule grip SSP16	H10713
20	Keramikringhalter SSP20 ferrule grip SSP20	H10714
22	Keramikringhalter SSP22 ferrule grip SSP22	H10715

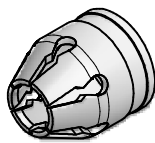


für Bolzen $\emptyset$ for stud $\emptyset$	Bezeichnung description	Artikel.-Nr. part.no.
4	Keramikringhalter SSP4 offen ferrule grip SSP4 open	H10700
6	Keramikringhalter SSP6 offen ferrule grip SSP6 open	H10701
8	Keramikringhalter SSP8 offen ferrule grip SSP8 open	H10702
10	Keramikringhalter SSP10 offen ferrule grip SSP10 open	H10703
12	Keramikringhalter SSP12 offen ferrule grip SSP12 open	H10704
16	Keramikringhalter SSP16 offen ferrule grip SSP16 open	H10705
20	Keramikringhalter SSP20 offen ferrule grip SSP20 open	H10706
22	Keramikringhalter SSP22 offen ferrule grip SSP22 open	H10707

## Keramikringhalter

## ferrule grip

KRH



für Bolzen $\emptyset$ for stud $\emptyset$	Bezeichnung description	Material material	$\emptyset$	Artikel.-Nr. part.no.
3+4	KRH4 ferrule grip KRH4	Messing brass	22	H10665
6	KRH6 ferrule grip KRH6	Messing brass	22	H10667
8	KRH8 ferrule grip KRH8	Messing brass	22	H10668
8	KRH8 ferrule grip KRH8	Kupfer copper	22	H11258
10	KRH10 ferrule grip KRH10	Messing brass	22	H10669
10	KRH10 ferrule grip KRH10	Kupfer copper	22	H10546
12	KRH12 ferrule grip KRH12	Messing brass	22	H10671
12	KRH12 ferrule grip KRH12	Kupfer copper	22	H11031
16	KRH16 ferrule grip KRH16	Kupfer copper	22	H10880
16	KRH16 ferrule grip KRH16	Messing brass	29	H10672
16	KRH16 ferrule grip KRH16	Kupfer copper	29	H10670
20	KRH20 ferrule grip KRH20	Messing brass	29	H10673
20	KRH20 ferrule grip KRH20	Kupfer copper	29	H11259
22+24	KRH22 ferrule grip KRH22	Kupfer copper	44	H10675

KRHo



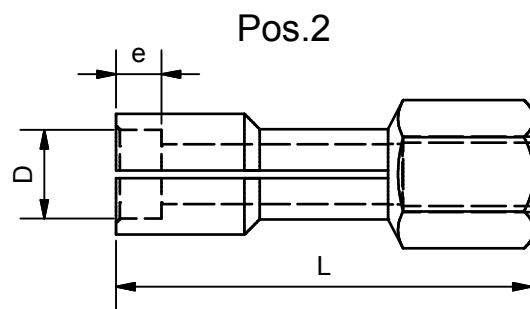
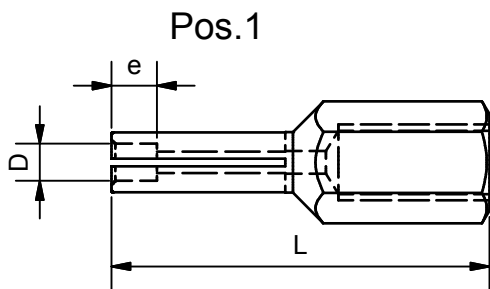
für Bolzen $\emptyset$ for stud $\emptyset$	Bezeichnung description	Material material	$\emptyset$	Artikel.-Nr. part.no.
4	KRHo4 ferrule grip KRHo4	Messing brass	22	H10692
5	KRHo5 ferrule grip KRHo5	Messing brass	22	H10693
6	KRHo6 ferrule grip KRHo6	Messing brass	22	H10694
8	KRHo8 ferrule grip KRHo8	Messing brass	22	H10695
10	KRHo10 ferrule grip KRHo10	Messing brass	22	H10696
12	KRHo12 ferrule grip KRHo12	Messing brass	22	H10697
16	KRHo16 ferrule grip KRHo16	Messing brass	29	H10698
20	KRHo20 ferrule grip KRHo20	Messing brass	29	H10973
22+24	KRHo22 ferrule grip KRHo22	Messing brass	44	H10974

**Bolzenhalter Standard**

SK12, SK14, K22, K22d, K24, K26

**chuck standard**

SK12, SK14, K22, K22d, K24, K26

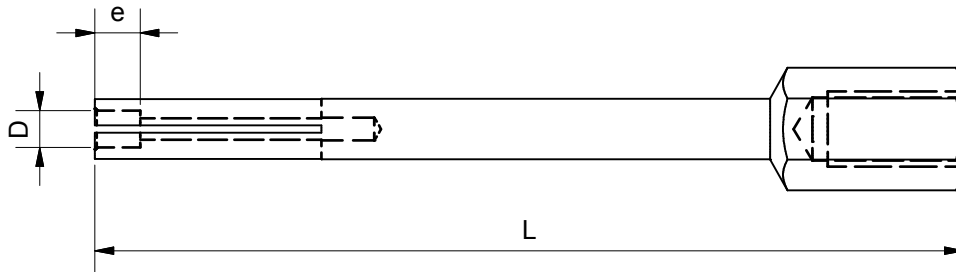


Pos.	Bezeichnung description	D	e	L	Artikel.-Nr. part.no.
1	BHM M3x 5x50	3	5	50	H10528
1	BHM M4x 5x50	4	5	50	H10529
1	BHM M4x25x50	4	25	50	H10957
1	BHM M5x 6x50	5	6	50	H10537
1	BHM M6x 4x50	6	4	50	H10585
1	BHM M6x 7x50	6	7	50	H10586
1	BHM M6x15x50	6	15	50	H10606
1	BHM M6x25x50	6	25	50	H10607
1	BHM M8x 4x50	8	4	50	H10958
1	BHM M8x 6x50	8	6	50	H10587
1	BHM M8x 9x50	8	9	50	H10588
1	BHM M8x25x50	8	25	50	H10959
1	BHM M8x25x70	8	25	70	H35637
1	BHM M10x 4x50	10	4	50	H10960
1	BHM M10x 6x50	10	6	50	H10589
1	BHM M10x11x50	10	11	50	H10590
1	BHM M10x25x50	10	25	50	H35597
2	BHM M12x 6x55	12	6	55	H10591
2	BHM M12x13x55	12	13	55	H10592
1	BHM M12x30x55	12	30	55	H35612
2	BHM M16x 5x55	16	5	55	H10597
2	BHM M16x10x55	16	10	55	H10961
2	BHM M16x15x55	16	15	55	H10598
2	BHM M18x 5x55	18	5	55	H10962
2	BHM M18x15x55	18	15	55	H10599
2	BHM M20x8x55	20	8	55	H10600
2	BHM M20x15x55	20	15	55	H10601
2	BHM M22x 7x55	22	7	55	H10602
2	BHM M22x15x55	22	15	55	H10603
2	BHM M24x 7x55	24	6	55	H10604
2	BHM M24x15x55	24	15	55	H10605



Bolzenhalter lange Ausführung

chuck long distance

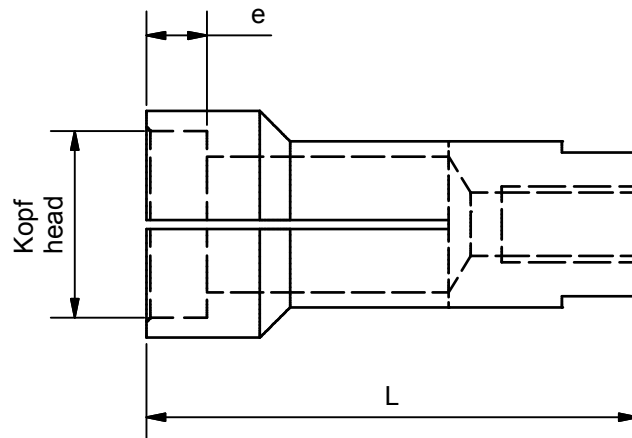


Bezeichnung description	D	e	L	Artikel.-Nr. part.no.
BHM M4x 5x110	4	5	110	H10608
BHM M5x 4x110	5	4	110	H10616
BHM M5x 6x110	5	6	110	H10609
BHM M5x 11x115	5	11	115	H12373
BHM M5x 15x115	5	15	115	H11345
BHM M6x 4x110	6	4	110	H10617
BHM M6x 7x110	6	7	110	H10610
BHM M6x 15x115	6	15	115	H11589
BHM M8x 4x110	8	4	110	H10618
BHM M8x 9x110	8	9	110	H10611
BHM M8x 20x110	8	20	110	H11152
BHM M10x 4x110	10	4	110	H10619
BHM M10x11x110	10	11	110	H10612
BHM M10x11x145	10	11	145	H10924
BHM M10x25x145	10	25	145	H35126
BHM M10x30x145	10	30	145	H35305
BHM M12x 4x110	12	4	110	H10620
BHM M12x13x110	12	13	110	H10613
BHM M12x13x145	12	13	145	H10925
BHM M12x30x145	12	30	145	H35306
BHM M16x 5x110	16	5	110	H10966
BHM M16x 7x110	16	7	110	H10967
BHM M16x13x125	16	13	125	H35375
BHM M20x15x125	20	15	125	H10969



Bolzenhalter für Kopfbolzen

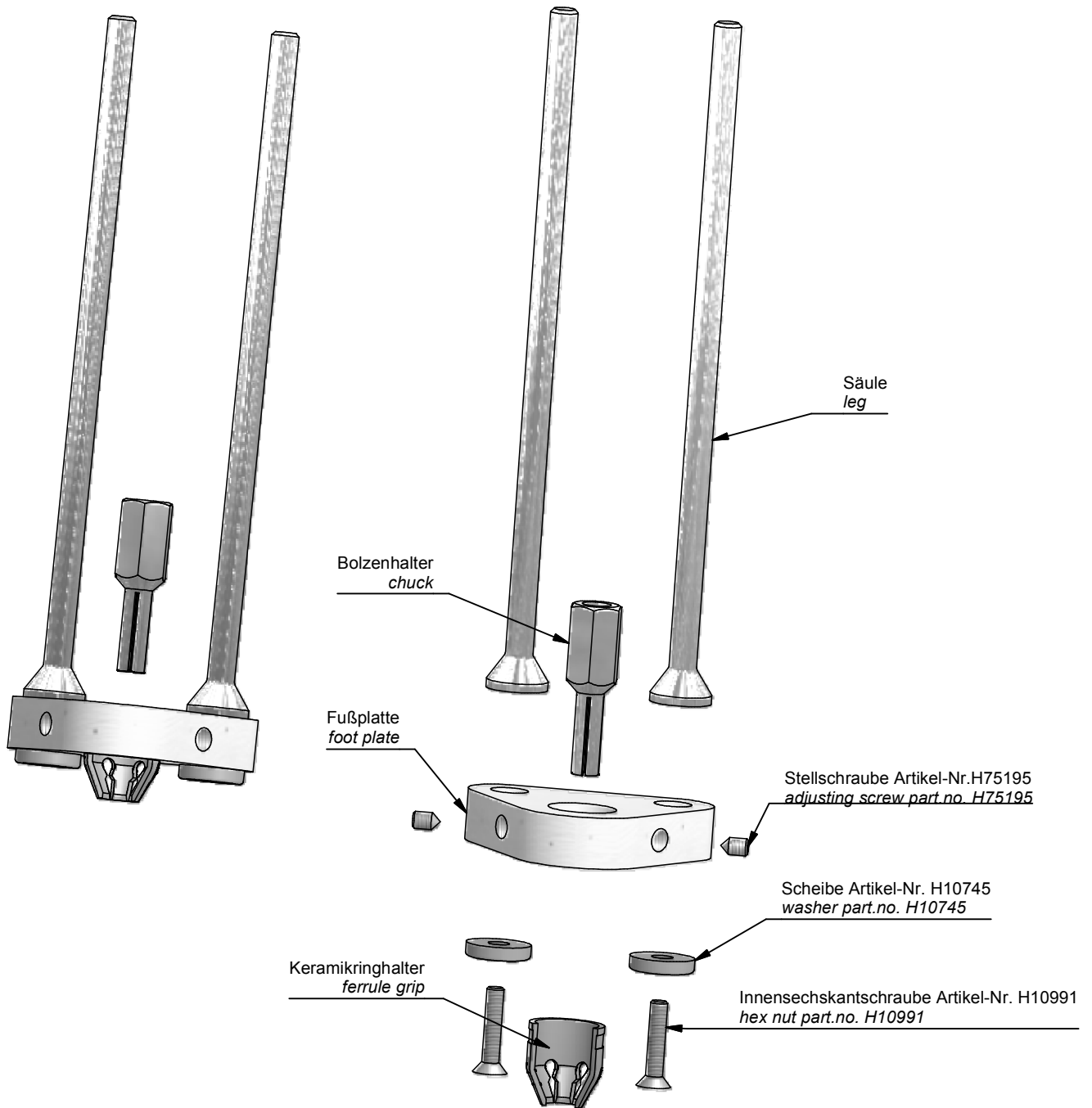
chuck for shear connector



L	für Bolzen $\varnothing$ for stud $\varnothing$	Kopf $\varnothing$ head $\varnothing$	e	Artikel.-Nr. part.no.
55	6 (1/4")	13	5,5	H10622
55	8	16	7	H10623
55	10 (3/8")	20	8,5	H10624
65	12+13 (1/2")	25	8,5	H10625
65	16 (5/8")	32	12	H10626
65	19 (3/4")	32	12	H10626
75	22 (7/8")	35	12	H10628

Pistolenausrüstung K22 Übersicht

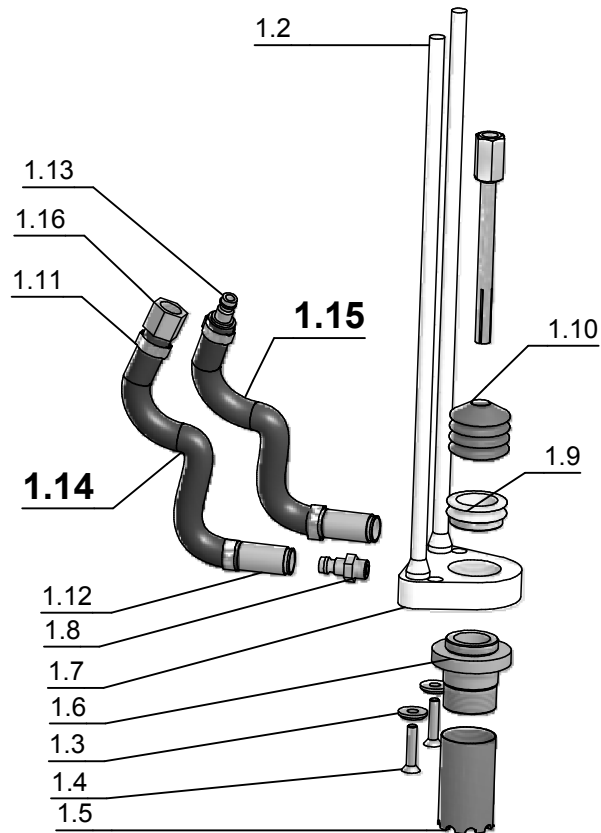
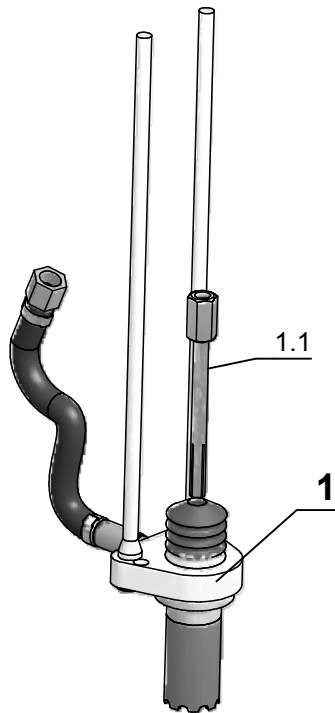
Tool set K22 overview





**Pistolenausrüstung K22**  
für das Schweißen mit Schutzgas

**Tool set K22**  
for stud welding with shield gas



Pos.	Bezeichnung	description	Artikel Nr. part.no.
1	<b>Pistolenausrüstung K22 alu kompl. für Gewindebolzen ohne Bolzenhalter</b>	<b>tool set K22 alu complete for threaded stud without chuck</b>	<b>H11727</b>

1.1 Auf Anfrage / on request

Pos.	Stück piece	Bezeichnung	Description	Artikel Nr. part.no.
1.2	2	Säule	leg special	H10954
1.3	2	Scheibe	washer	H10745
1.4	2	Innensechskantschraube	hex nut	H10991
1.5	1	Kupferstützrohr	copper pipe	H11167
1.6	1	Zwischenstück	adaptor	H11166
1.7	1	Schutzgasfußplatte alu	gas footplate alu	H11155
1.8	1	Schutzgasstecker 1/8"	gas plug male 1/8"	H11158
1.9	1	Klemmring	adaptor for bellow	H11156
1.10	1	Faltenbalg	below s	H10911
1.14	1	Schlauch 3m	tube 3m	H35082
		inkl.		
1.11	2	Schutzgasschlauchklemme	tube clamp	H11162
1.12	1	Schutzgaskupplung	gas plug female	H11159
1.16	1	Schutzgasnippel	gas nut	H35513
1.15	1	Schlauch 12m komplett	tube 12m complete	H13812
		inkl.		
1.11	2	Schutzgasschlauchklemme	tube clamp	H11162
1.12	1	Schutzgaskupplung	gas plug female	H11159
1.13	1	Schutzgasschlauchstutzen	tube connection	H11161



## Universalpistolenausrüstung K22

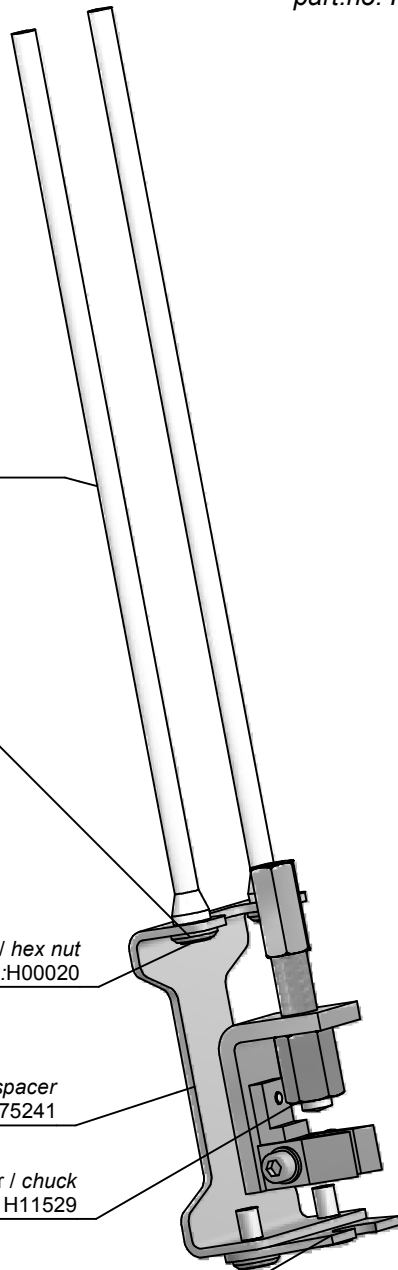
zum Verschweißen von Elektro Flachstegen Typ HFS und Grundplatten Typ HNA  
mit Bolzen 10x40 bis 10x80

Artikel Nr.:H35811

## universal welding gun equipment K22

for welding of flat bar type HFS and groundplate type HNA  
with stud 10x40 - 10x80

part.no. H35811



Säule / leg  
Artikel-Nr.: / part.no.:H10951

Scheibe / washer  
Artikel-Nr.: / part.no.H35203

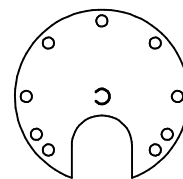
Innensechskantschraube / hex nut  
Artikel-Nr.: / part.no.:H00020

Distanzstück / spacer  
Artikel-Nr.: / part.no.:H75241

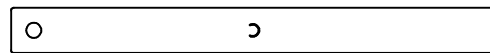
Bolzenhalter / chuck  
Artikel-Nr.: / part.no.: H11529

Fußplatte / footplate  
Artikel-Nr.: / part.no.H10703

Typ HNA / type HNA



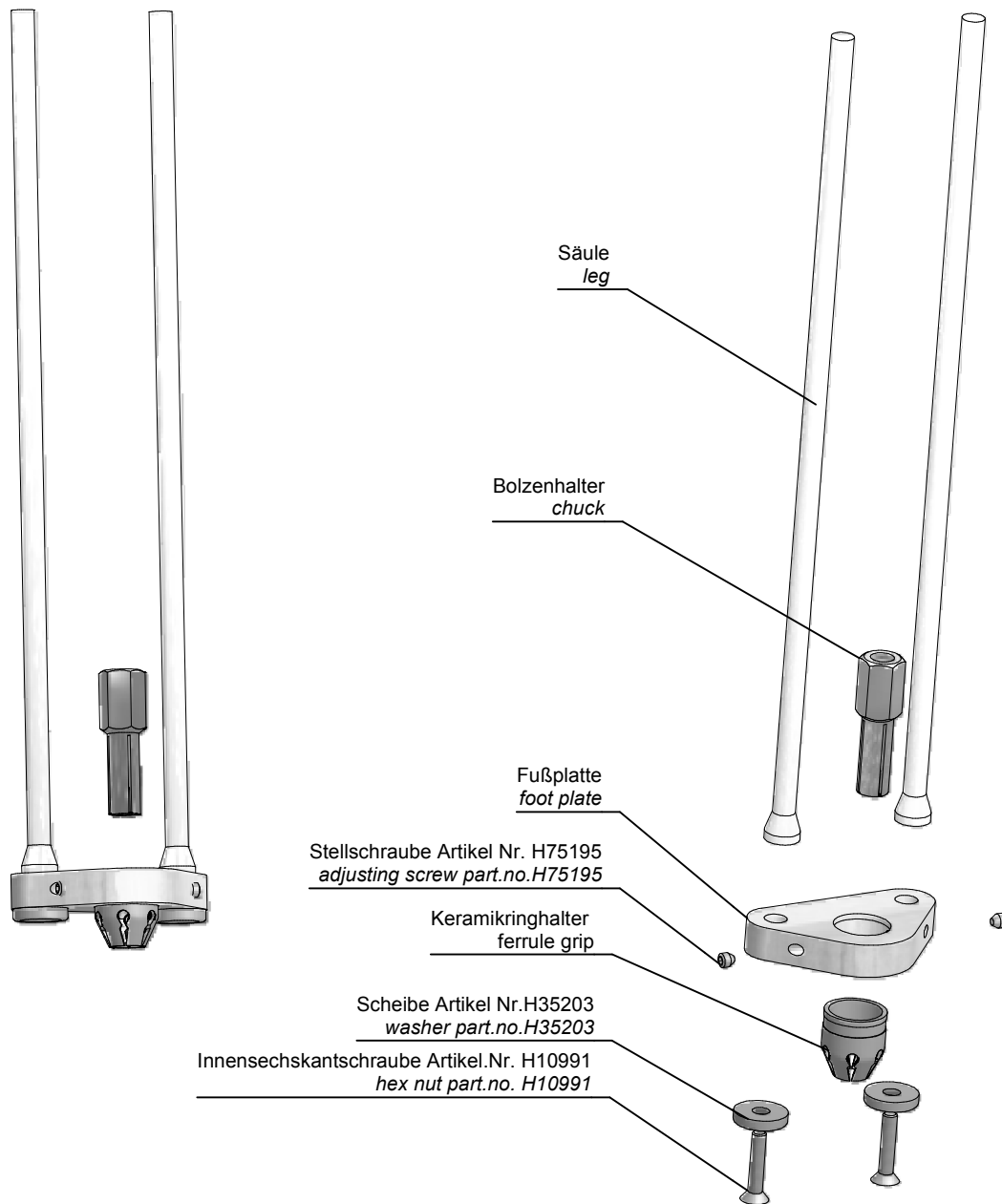
Typ HFS / type HFS





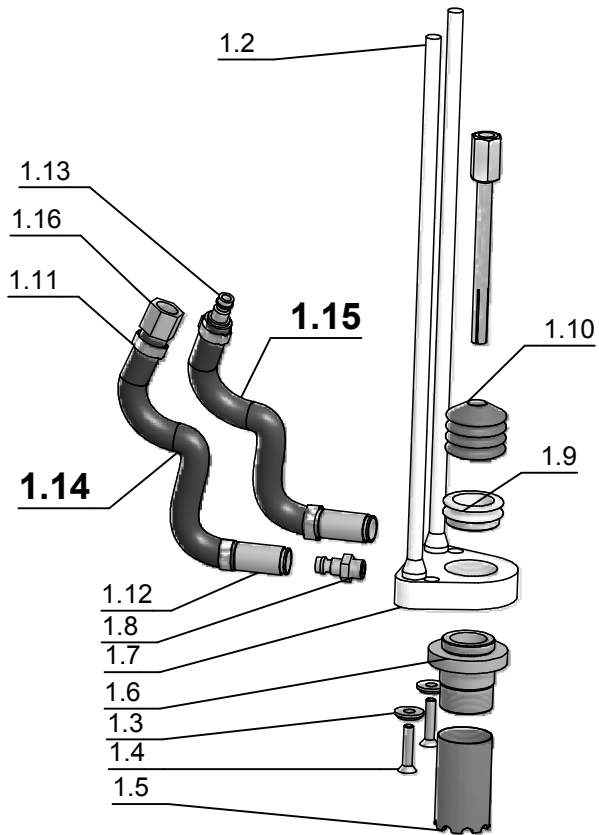
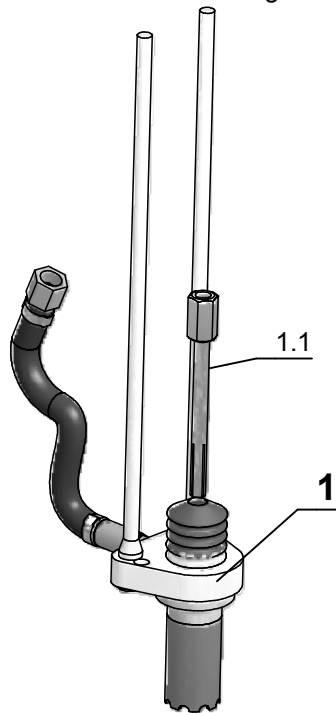
Pistolenrüstung SK 14 ISO  
Übersicht

tool set SK 14 ISO  
overview



**Pistolenausrüstung SK 14 ISO**  
für das Schweißen mit Schutzgas

**tool set SK 14 ISO**  
for stud welding with shield gas



Pos.	Bezeichnung	description	Artikel Nr. part.no.
<b>1</b>	<b>Pistolenausrüstung SK14 ISO kompl. für Gewindebolzen ohne Bolzenhalter</b>	<b>tool set SK14 ISO complete for threaded stud without chuck</b>	<b>H35565</b>
1.1	Auf Anfrage / on request		

Pos.	Stück piece	Bezeichnung	Description	Artikel Nr. part. no.
1.2	2	Säule	leg special	H10954
1.3	2	Scheibe	w asher	H35203
1.4	2	Innensechskantschraube	hex nut	H10991
1.5	1	Kupferstützrohr	copper pipe	H11167
1.6	1	Zw ischenstück	adaptor	H11166
1.7	1	Schutzgasfußplatte alu	gas footplate alu	H11155
1.8	1	Schutzgasstecker 1/8"	gas plug male 1/8"	H11158
1.9	1	Klemmring	adaptor for bellow	H11156
1.10	1	Faltenbalg	below s	H10911
1.14	1	Schlauch 3m inkl.	tube 3m	H35082
1.11	2	Schutzgasschlauchklemme	tube clamp	H11162
1.12	1	Schutzgaskupplung	gas plug female	H11159
1.16	1	Schutzgasnippel	gas nut	H35513
1.15	1	Schlauch 15m komplett inkl.	tube 15m complete	H35514
1.11	2	Schutzgasschlauchklemme	tube clamp	H11162
1.12	1	Schutzgaskupplung	gas plug female	H11159
1.13	1	Schutzgasschlauchstutzen	tube connection	H11161