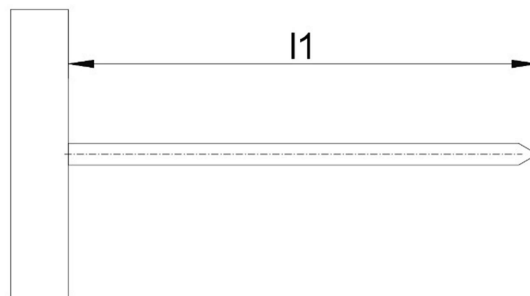
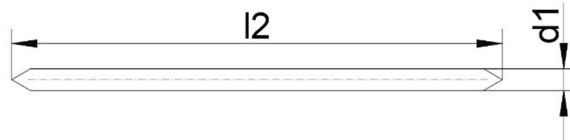
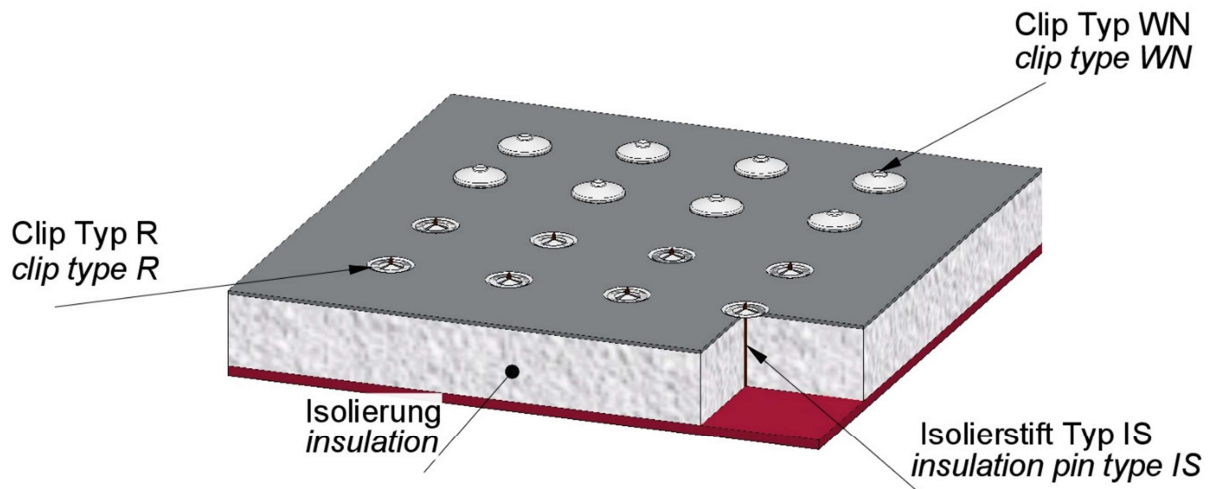




Isolierung

Isolierstifte Typ IS für Stahl-oder Cr-Ni-Konstruktion



d1	3	4	5
l1+1	25-500	25-500	25-500
l2	l1+3	l1+3	l1+3

Material

- Stahl verkupfert
- Chrom-Nickel-Stahl 1.4571

Weitere Materialien und Abmessungen auf Anfrage

K2021-43

Hilbig GmbH • Postweg 204 • 21218 Seevetal • Germany